

Integrated Community Network Plus (ICN+)

Bringing Croydon together



Why?

Because we are better together, we want to revolutionise the way we work to enable everyone to live well.

How?

By realising the opportunity for the system to operate as one and to foster a partnership with the person that enables the individual to take control of their health and wellbeing

What?

An integrated Croydon health and social care system where an individual can experience seamless services, make shared decisions and live well.

Introduction

Delivering to the Directional Statement

This directional statement sets out One Croydon's focus for the next three years, to deliver an integrated care system in Croydon by 2021.

Working together we aim to improve the health of the people of Croydon, while also reducing inequalities both in life expectancy and healthy life expectancy. We began our journey focusing on the over 65's, our next step is to extend our scope to the whole population, aligning interventions and services to need, helping those that experience the worst health improve their health the fastest.

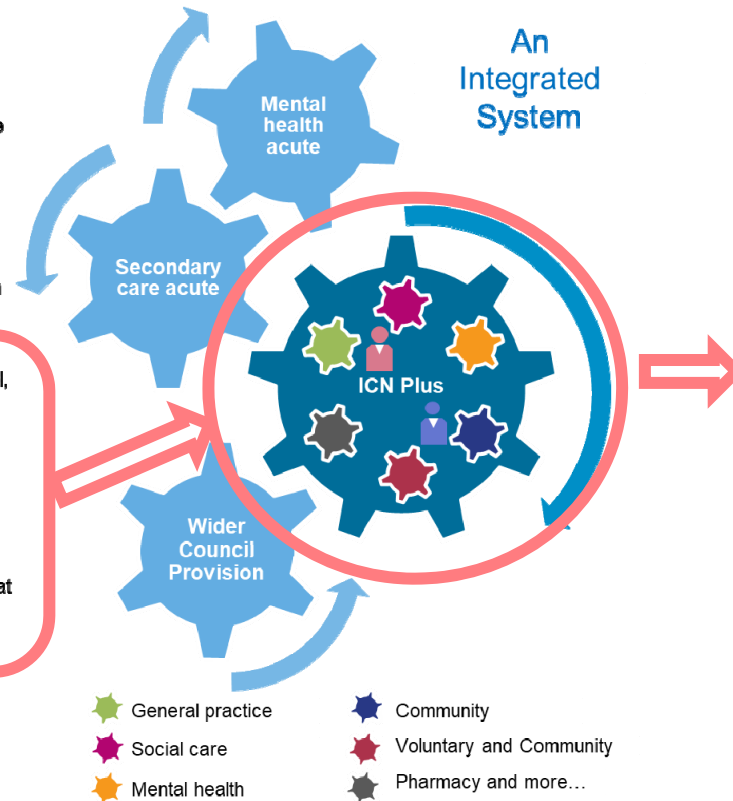
1. Our delivery model

To deliver preventative and proactive care for the whole population and to engage the community directly requires:

- a. **Community services to be organised around localities** – Building on our current Integrated Community Network model, ICN Plus will develop wider health and care models of care around 6 GP networks, with wider council services delivered around 3 gateway localities. Health and care need, the responding models of care and affordability will determine whether interventions need to be delivered at locality level, across localities or borough wide.

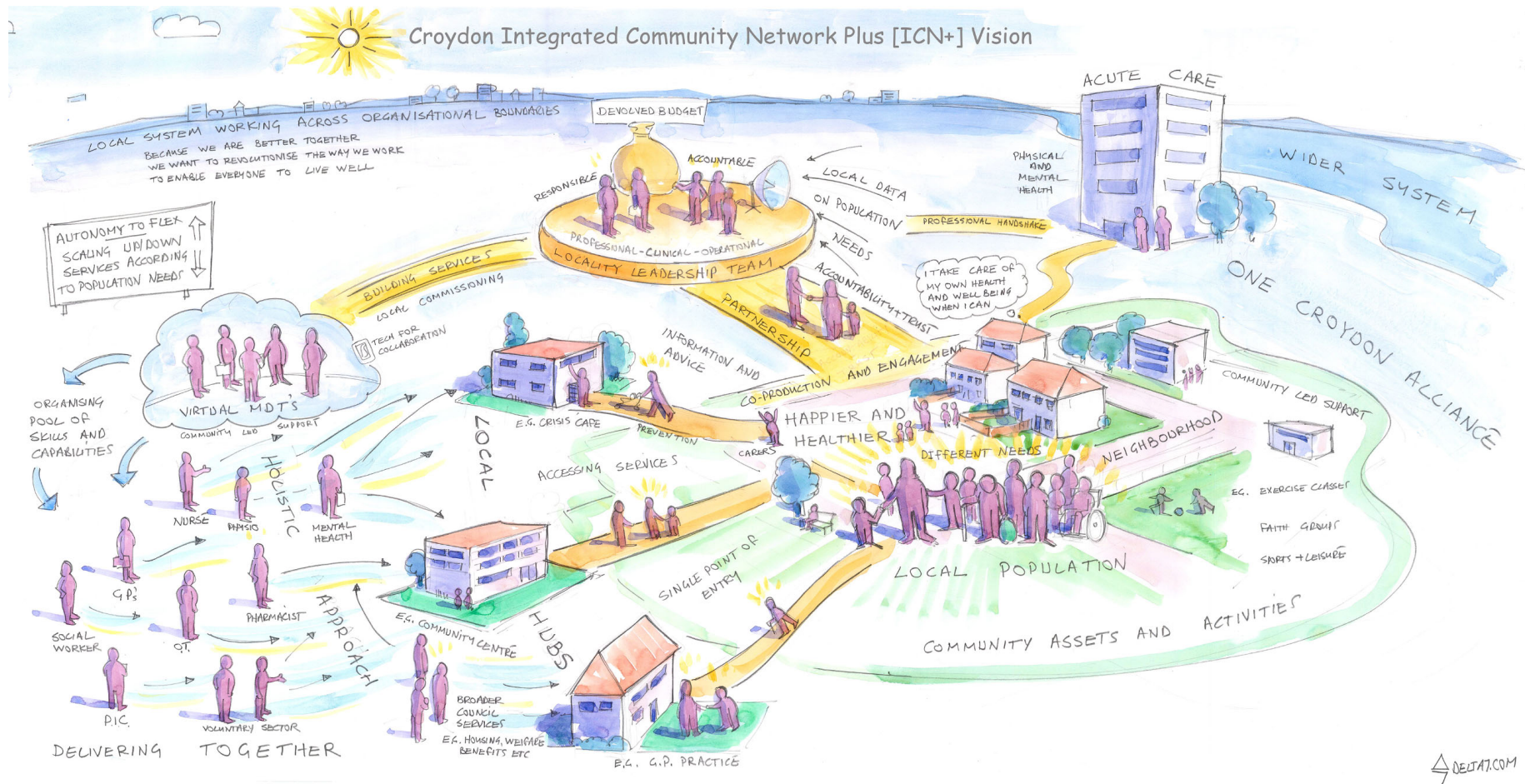
Models of care will focus on a range of services that will go beyond working jointly but will work in an integrated way. That means the workforce will be multi-skilled to work across traditional but sometimes, artificial professional boundaries and also joint locality management teams.

- b. **Modern acute hospitals - both secondary and mental health** – health and care models will ensure only those that need acute services go to hospital. Our local providers, by becoming the providers of choice will ensure acute provision responds at the point of need with a focus on good clinical outcomes enabling local integrated care.



ICN+ is a framework to integrate community based services around a local population of circa 50k

The emerging vision for ICN+



- People can get a different support easily and quickly and feel empowered
- Staff are empowered, feel trusted & are able to use their time better
- Resources are used better - move from acute to community
- Staff are part of a “team” who know their neighbourhood
- Population health outcomes are the focus
- People are happier and healthier

3 key functions

Local Population

Representative of the network population

Inform the development of services to meet the local needs

Promote community ownership of own health and wellbeing in the community

Promote community ownership of ICN+

Encourage community development of social assets that support ICN+

Leadership Team

Set a common purpose in partnership with the local population

Lead the MDT

Manage a devolved financial and operational responsibility to make decisions on the use of resources and service delivery for their communities using population data

Will be multidisciplinary and multi-sector

MDT

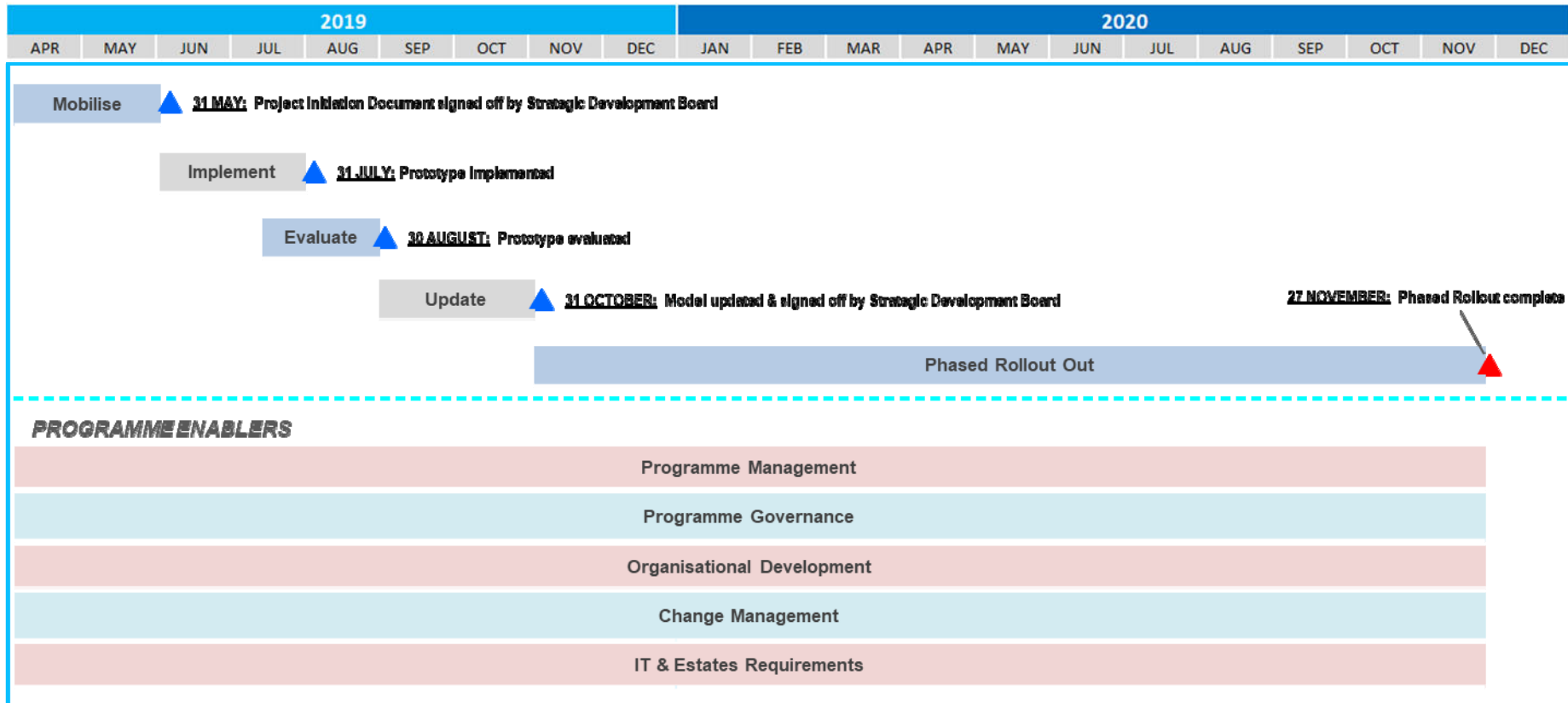
Co-located teams with emphasis on information sharing, joint assessment and care management

Provide one-stop care where possible or will see issues for an individual through to solution

Develop deep understanding of their local population, anticipating issues and resolving quickly

Identify areas for improvement at the coalface

Mobilising the prototype – plan for delivery



Dependency on other programmes:

- Modern acute hospital, PCN alignment, mental health model, LTC work
- Workforce, IT, estates, population health management to align with prototype